



**We work alongside  
Greater Manchester  
Police.**

**To report a crime, call 101  
or if you are in immediate  
danger call  
999.**

**We are funded by Greater  
Manchester Combined  
Authority  
(GMCA).**

**Greater Manchester  
Victims' Services**

**catch  
22**

**GMCA**

GREATER  
MANCHESTER  
COMBINED  
AUTHORITY

## **Contact Us**

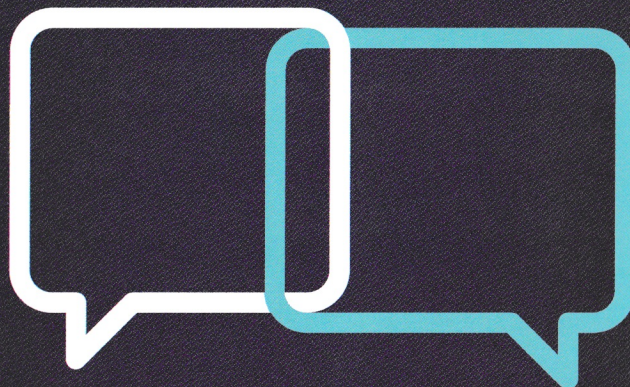
**Helpline:**  
0800 876 6155

**Text Relay:**  
180020800876615

**Opening Hours:**  
8am - 6pm Monday to Friday  
8am - 8pm Wednesdays  
9am-5pm Saturdays

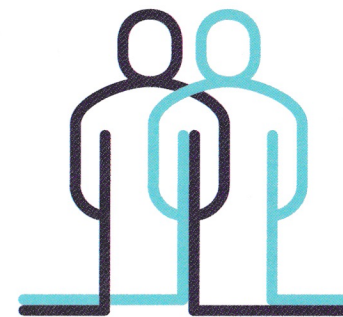
**Email:**  
[GMVictims@catch-22.org.uk](mailto:GMVictims@catch-22.org.uk)

**Website:**  
[www.gmvictims.org.uk](http://www.gmvictims.org.uk)



**Greater Manchester  
Victims' Services**

**We're  
with you  
every  
step of  
the way.**



**catch  
22**

**GMCA** GREATER  
MANCHESTER  
COMBINED  
AUTHORITY



# Here to Help

**Greater Manchester Victims' Services (GMVS) offer a free, independent and confidential service for victims and witnesses across Greater Manchester.**

GMVS provides a centre of excellence to help victims and witnesses in Greater Manchester to cope and recover from the impact of crime, regardless of how long ago it happened or whether it was reported to the police.

Our team of specialist caseworkers pride themselves on having a victim-centred approach which uses a thorough needs assessment to create a bespoke support plan that is tailored around the victim's needs and wishes. The service also ensures that the most vulnerable victims are recognised and receive enhanced support.

GMVS works in close partnership with other organisations to get the best outcomes for victims. We believe a multi-agency approach is crucial in preventing repeat victimisation and allows us to share insights and learning with our partners.

# What's available to me?

- Someone to talk to about the impact of the crime
- Bespoke practical support and information provision
- Support through the criminal justice process, if applicable
- Referrals and signposting to other organisations who might be able to help
- Advocacy with other agencies where needed



# Children and young people

If you, or your child, are under the age of 18 have been a victim or witness of crime, GMVS can provide tailored, age-appropriate support through our specially trained caseworkers.